

1955

1965

1975

1985

1995

2005

2015

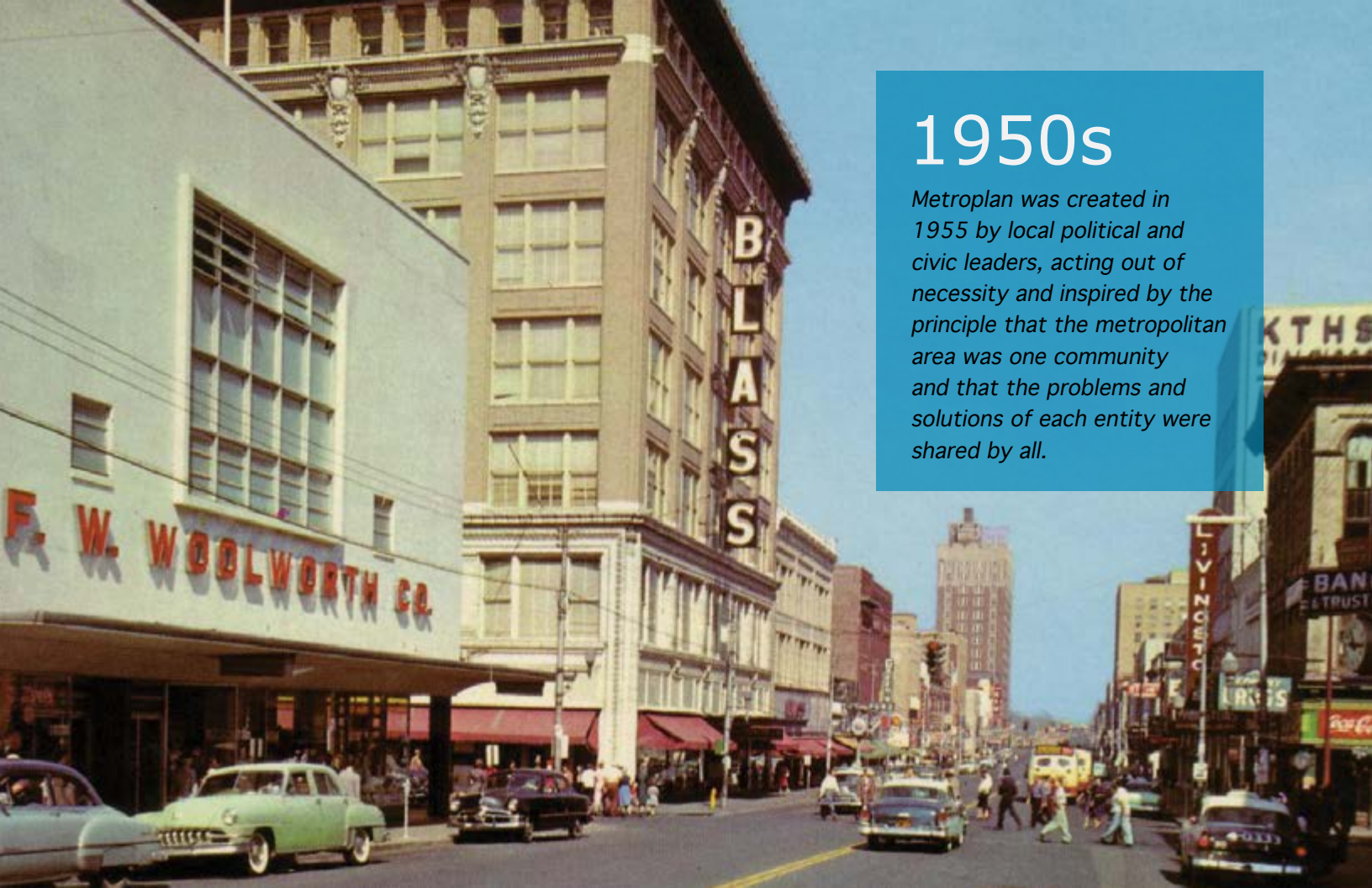
1955

METROPLAN

60

2015

METROPLAN'S 60<sup>TH</sup> ANNIVERSARY



# 1950s

*Metroplan was created in 1955 by local political and civic leaders, acting out of necessity and inspired by the principle that the metropolitan area was one community and that the problems and solutions of each entity were shared by all.*

***Metroplan was initially named the Metropolitan Area Planning Commission (MAPC).***

## **Committee of 100**

- 1955: Act 26 Of 1955, An Act To Enable Political Subdivisions To Cooperate Jointly In Area Planning
- 1955: Metropolitan Area Planning Commission (Pulaski County) established

## **Initial Plans**

- 1956: "Proposed Highway System"
- 1957: Preliminary Development Plan for Pulaski County
- 1957: "Plan for Half Million People"

## **Park Plans**

- 1958: "A Preliminary Report on the Recreational Use of Lake Maumelle" & "Site Layouts for a Basic Recreational Plan on Lake Maumelle"
- 1959: "A Plan for Burns Park"



*The anniversaries of Metroplan and the Little Rock Air Force Base (LRAFB) are inextricably linked: The LRAFB was a large catalyst in the formation of Metroplan.*



# 1960s

*In 1960, jets began flying into the Little Rock airport, Adams Field.*



## Major Plans

1962: “Industrial Growth Plan”

1962: Reflecting the federal emphasis on urban renewal programs, MAPC made an application to the Housing and Home Finance Agency for a federal grant to undertake urban renewal programs in central Arkansas.

1964: Comprehensive Development Plan

1965: “Adams Field Airport Plan”

1965: “Civil Defense Plan”

1966: Pulaski Area Transportation Study- Highway Transportation Plan and Implementation Program

MAPC Board recommends consolidating school districts in Pulaski County

1967: Master Plan Report: Water Supply and Distribution  
Transit Planning Study: LR, NLR Area

1968: 1990 Comprehensive Development Plan



Stuart Eurman

In 1966, Director Stuart Eurman left MAPC to organize and direct a similar regional council in Kansas City, MO, and Jason Rouby was hired in his place



Jason Rouby



## 1970s

*In 1972, Metroplan became the trustee for Central Arkansas Transit.*

**In 1970, MAPC reorganized as a council of local governments and changed its name to METROPLAN.**

### **Open Space**

1970: Published Open Space Plan and Program

1971: Partnered with Arkansas Chapter of the American Institute of Architects to create a park/open space design for the Pulaski County banks of the Arkansas River, which would become Riverfront Park.

1972: Became trustee for Central Arkansas Transit

1974: Governor Dale Bumpers designated Metroplan the Metropolitan Planning Organization (MPO) for Central Arkansas

### **The Environment**

1977: Designated lead agency for water quality planning authorized by Section 208 of the Federal Water Pollution Control Act

1978: Designated lead agency for air quality and waste disposal planning

*“A shift of emphasis to environmental areas brought Metroplan closer to establishment of an integrated planning program.”*

—1978 Annual Report



# 1980s

## Clean Water

In 1982 Fourche Creek Urban Runoff Project and Lake Maumelle Clean Lakes Project completed.

Photo: Fourche Creek. Sync Weekly.

## Time for Change

1980: Transition Plan for Metroplan and CAT developed

1988: Jason Rouby retired as Metroplan Director after 22 years of service. Rouby was replaced by Jim McKenzie

1988: CATA formally spun off

1989: Metroplan became the administrative agent for Pulaski County 911, managing and dispensing tax collections designated for 911 operations

## Major Plans

1981: Published Maumelle Corridor Control Access Plan

1983: Proposed South Loop

## Public Policy

1989: The Metroplan Board established a public policy research program. In its first year, the program published:

“An Analysis of State General Revenue Turnback in Arkansas”

“Jail Overcrowding In Pulaski County: A Preliminary Assessment”



Jim McKenzie, 1995



# 1990s

A lot has changed since this Little Rock photo from 1996.

Clinton Library and Park  
River Market Building  
Main Library  
First Security Tower  
300 Third Tower  
River Market Tower

Axiom Headquarters  
Heifer Intl Headquarters  
New Main St. Bridge configuration  
CATA Travel Center  
Several hotels  
Capital Commerce Building

Historic Arkansas Museum  
Chamber of Commerce Building  
Convention Center Expansion  
River Rail Trolley  
Riverfront Park Improvements  
Arcade Building

New or Redone Building  
Transportation Improvement  
New or Improved Park

## In 1991, Metroplan initiated its broadest reorganization since 1970

1991: Central Arkansas Regional Transportation Study (CARTS) replaced PATS (Pulaski Area Transportation Study)  
Congress passed the Intermodal Surface Transportation Efficiency Act (ISTEA)  
Transportation Advisory Council (TAC) formed  
1995: METRO 2020 adopted, 1st post-ISTEA long-range transportation plan  
1998: Transportation Equity Act for the 21st Century replaces ISTEA

## Public Policy

In the 1990s, Metroplan Board continued its public policy research program. Through the program, Metroplan published:  
“Arkansas Local Government Tax Capacity”  
“Metropolitan Regional Solid Waste Study”

## Plans and Studies

1998: Access Management Plan for Hwy. 60/Dave Ward Drive approved  
1999: Regional bikeway plan developed  
I-630 study completed



Argenta 1995

*“This new transportation bill, with its strong emphasis on comprehensive planning, provides us with tremendous challenges, but it also requires us to develop new planning capacities and to work cooperatively toward a common goal in entirely new ways.”*



# 2000s

River Rail trolley system opened in 2004, spurring economic development on both sides of the river.



## Plans and Studies

2000: METRO 2025 was adopted.

The Vision and Goals were published:

- |   |                                     |
|---|-------------------------------------|
| 1. Economic Growth                              | 4. Land Use                         |
| 2. Equality of Access and Transportation Choice | 5. Quality Transportation Corridors |
| 3. Environmental Quality                        | 6. Funding Adequacy                 |

2001: Rural Traffic Shed Management Study  
Regional Arterial Network Study

2002: Incident Management Study adopted  
Regional Arterial Network (RAN) study completed by consultants

2004: South Loop study initiated  
River Rail trolley system opened

2005: METRO 2030 adopted  
Roadway analysis conducted for I-30 study  
CARTS remained in attainment for air quality

2006: Riverdale Traffic Study Initiated  
Alcoa Road Access Management Plan Adopted  
South Loop Feasibility Study and Environmental Analysis Conducted

In 2000, Metroplan Received the National Award for Outstanding Leadership in Metropolitan Transportation Planning presented by the Association of Metropolitan Planning Organizations.





# 2000s

The initial meeting of small and large water systems took place in 2001. A few years later the group Incorporated as the Mid-Arkansas Water Alliance, to “secure long-term sources of high-quality drinking water for its membership.”



Photo: Lake Maumelle, Coloradoguy.com.

## Plans and Studies

- 2007: CARTS Design and Access Management Standards adopted  
CARTS Pedestrian/Bicycle Decade (1995-2005) Crash Analysis completed
- 2008: I-630/I-430 Interchange Design Concept approved  
LR Airport Rail Study initiated
- 2009: Census tract and traffic zone boundaries approved for 2010 Census  
Operation Bottleneck undertaken  
I-630 Fixed Guideway Alignment Study consultant selected and scope of work developed



*“Metroplan Council of Local Governments... provided leadership in bringing together our member jurisdictions.”*



# 2010s

Arkansas River Trail  
Memorandum of Understanding  
was signed on May 23, 2012.

## The Arkansas River Trail

2006: Big Dam Bridge opened

2011: Two Rivers Park Bridge completed

2012: Memorandum of Understanding signed by 11 entities

2012: Metroplan and the Arkansas River Trail Task Force coordinated the design of a logo, Web site and signage.

## Plans and Studies

2010: METRO 2030.2 adopted

Conway Transit Feasibility Study completed

2011: RAN Status Update published

Green Agenda adopted

CARTS study area expanded

The TAC was renamed RPAC (Regional Planning Advisory Council), and the focus of the upcoming Plan was broadened to include sustainability and housing,

2012: Pike Avenue Pedestrian/Bike Safety Study completed

2013: I-630 Fixed Guideway Study (light rail in central Arkansas)

2014: Livability Index was completed and designed as a Web site



Riders lined up to cross the Big Dam Bridge to the MOU press conference.



# 2010s

*Imagine Central Arkansas was adopted in December, 2014.*



## ***Imagine Central Arkansas and HUD Sustainability Grant***

- 2011: Metroplan received a Sustainable Communities grant from HUD (U.S. Dept. of Housing and Urban Development)  
The RPAC named the upcoming Long-Range Plan *Imagine Central Arkansas*
- 2012: Imagine Central Arkansas Partners (ICAP) was formed  
*Imagine Central Arkansas* public outreach began
- 2013: Five Jump Start areas were chosen as part of the HUD grant (in Little Rock, Bryant, North Little Rock and Conway).
- 2014: *Imagine Central Arkansas: Blueprint for a Sustainable Region* was adopted by the Board on December 14, 2014  
Fair Housing Equity Assessment completed  
Vilonia and Mayflower were added as Jump Start projects
- 2015: Jump Start planning process completed





# 2010s

*In 2012, the Moving Ahead for Progress in the 21st Century Act (MAP-21) was signed into law. MAP-21 provides needed funds and will guide the growth and development of the country's vital transportation infrastructure.*

<http://www.fhwa.dot.gov/map21>

## Major Construction Projects

2011: North Little Rock and Conway roundabouts opened

2012: Widening I-40 to six lanes-Little Rock to Conway begun

Widening U.S. Hwy 67 to six lanes- Jacksonville to Cabot begun

Improvements to I-30 connecting Little Rock and North Little Rock planned

Widening US Hwy 64 to four lanes - Conway to Beebe begun

Widening of US Hwy 70 to four lanes between I-30 and Hot Springs planned

2013: South Loop Rail Grade Separation Completion

Military Road Widening

Levy Trail

South Street Streetscape Benton

Haskell Sidewalks

2014: Graham Road Widening

Shillcutt Bayou Bridge

Main and Harris Roundabout

Widening Alcoa Road begun

McCain Railgrade Separation begun



A familiar sight on central Arkansas roadways.

# Logos

*The name and the logo have gone through many changes over the last 60 years.*



1955	Mr. Raymond Rebsamen
1956	Mr. Raymond Rebsamen
1957	Mr. M.S. McCord
1958	Mr. Sam Strauss, Sr.
1959	Mr. Sam Strauss, Sr.
1960	Mr. John P Matthews
1961	Mr. John P Matthews
1962	Mr. Gus Ottenheimer
1963	Mr. Howard Eichenbaum
1964	Mr. Howard Eichenbaum
1965	Mr. Kenneth Pat Wilson
1966	Mr. James Binder
1967	Mr. James Binder
1968	Mr. James Binder
1969	Mr. James Binder
1970	Mayor W. F. (Casey) Laman
1971	Mayor W. F. (Casey) Laman
1972	Mayor Dean Boswell
1973	Mayor Dean Boswell
1974	Judge B. Frank Mackey
1975	Judge B. Frank Mackey / Mr. Jack Young

## Metroplan Board Presidents

1976	Mr. Jack Young /Mayor B.E. (Bill) Henson	1996	Judge Don Bevis
1977	Mayor B.E. (Bill) Henson	1997	Mayor Bill Harmon
1978	Mayor B.E. (Bill) Henson	1998	Mayor Jim Dailey
1979	Mr. William H. McLean	1999	Judge John W. Carter
1980	Mayor James Reid	2000	Mayor Joe Allman
1981	Judge W.E. Beaumont, Jr.	2001	Mayor Tab Townsell
1982	Judge W.E. Beaumont, Jr.	2002	Judge Lanny Fite
1983	Mr. Russell H. Matson, Jr.	2003	Mayor Pat Hays
1984	Mayor J.W. Benafield	2004	Mayor Paul Halley
1985	Mayor J.W. Benafield	2005	Mayor Frank Pearce
1986	Mayor Jack Evans	2006	Mayor Burch Johnson
1987	Judge Don Venhaus	2007	Mayor Richard Holland
1988	Judge Don Venhaus	2008	Mayor Tab Townsell
1989	Mayor Harold McIntire	2009	Mayor Art Brooke
1990	Mayor Sharon Priest	2010	Mayor Mark Stodola
1991	Mayor Pat Hays	2011	Judge Preston Scroggin
1992	Mayor Tommy Swaim	2012	Mayor Mike Watson
1993	Judge Buddy Villines	2013	Mayor Bill Cypert
1994	Judge Terry Parsons	2014	Judge Jeff Arey
1995	Mayor David Kinley	2015	Mayor Randy Holland



“While it is always nice to reflect on the achievements of the past, the challenges of the future are pressing down on us today. As we rise to meet them, and I feel certain we will, the future of Central Arkansas looks bright indeed.”

—1995, Jim McKenzie,  
Executive Director

**Metroplan Board 2015**

<b>PRESIDENT</b> <b>Mayor Randy Holland</b> City of Mayflower		<b>SECRETARY</b> <b>Mayor Art Brooke</b> City of Ward	
<b>VICE PRESIDENT</b> <b>Mayor Gary Fletcher</b> City of Jacksonville		<b>TREASURER</b> <b>Mayor Jill Dabbs</b> City of Bryant	
Mayor Paul Mitchell City of Alexander	Mayor David Mattingly City of Benton	Mayor Tab Townsell City of Conway	
Mayor Bernadette Chamberlain City of Austin	Mayor Bill Cypert City of Cabot	Mayor Sammy Hartwick City of Greenbrier	
Mayor Bill Russell City of Bauxite	Mayor David Graf City of Cammack Village	Mayor Janie Lyman City of Haskell	

Mr. David Twiggs Hot Springs Village	Mayor Joe Wise City of Sheridan	Judge Kemp Nall Grant County
Mayor Mark Stodola City of Little Rock	Mayor Virginia Young City of Sherwood	Judge Doug Erwin Lonoke County
Mayor Wayne McGee City of Lonoke	Mayor Michael Nash City of Traskwood	Judge Barry Hyde Pulaski County
Mayor Mike Watson City of Maumelle	Mayor Terry Don Robinson City of Wooster	Judge Jeff Arey Saline County
Mayor Ricky Pearce City of Mount Vernon	Mayor McKinzie L. Riley City of Wrightsville	Ms. Jessie Jones Arkansas State Highway and Transportation Department
Mayor Joe Smith City of North Little Rock	Mayor James Firestone City of Vilonia	Mr. Jarod Varner CATA/Rock Region Metro
Mayor Mike Kemp City of Shannon Hills	Judge Jim Baker Faulkner County	

## ***Metroplan Staff 2015***

Jim McKenzie, AICP  
Executive Director

Richard Magee, AICP  
Deputy Director

Cindy Segebarth  
Administrator

Casey Covington, PE, AICP  
Transportation Engineer  
CARTS Study Director

Lynn Bell  
Graphics Specialist

Susan Dollar, AICP  
Transportation Planner/  
Title IV/ADA /504

Rebecca Dong  
Staff Accountant

Hans Haustein  
GIS Planner

Daniel Holland  
Planner

Jonathan Lupton, AICP  
Research Planner

Timothy Miles, CPCU, ARM  
Risk Administrator

Jeff Runder  
GIS Planner

Allen Skaggs  
GIS/Planning Technician

Iris Woods  
Receptionist





