

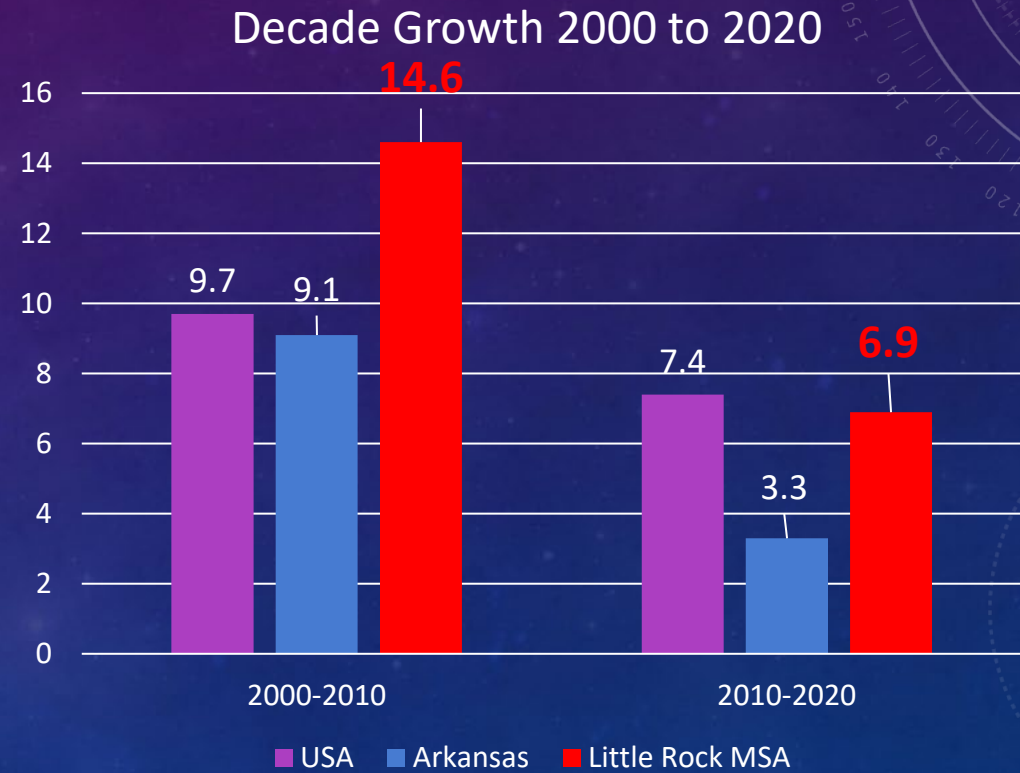
# CENSUS 2020

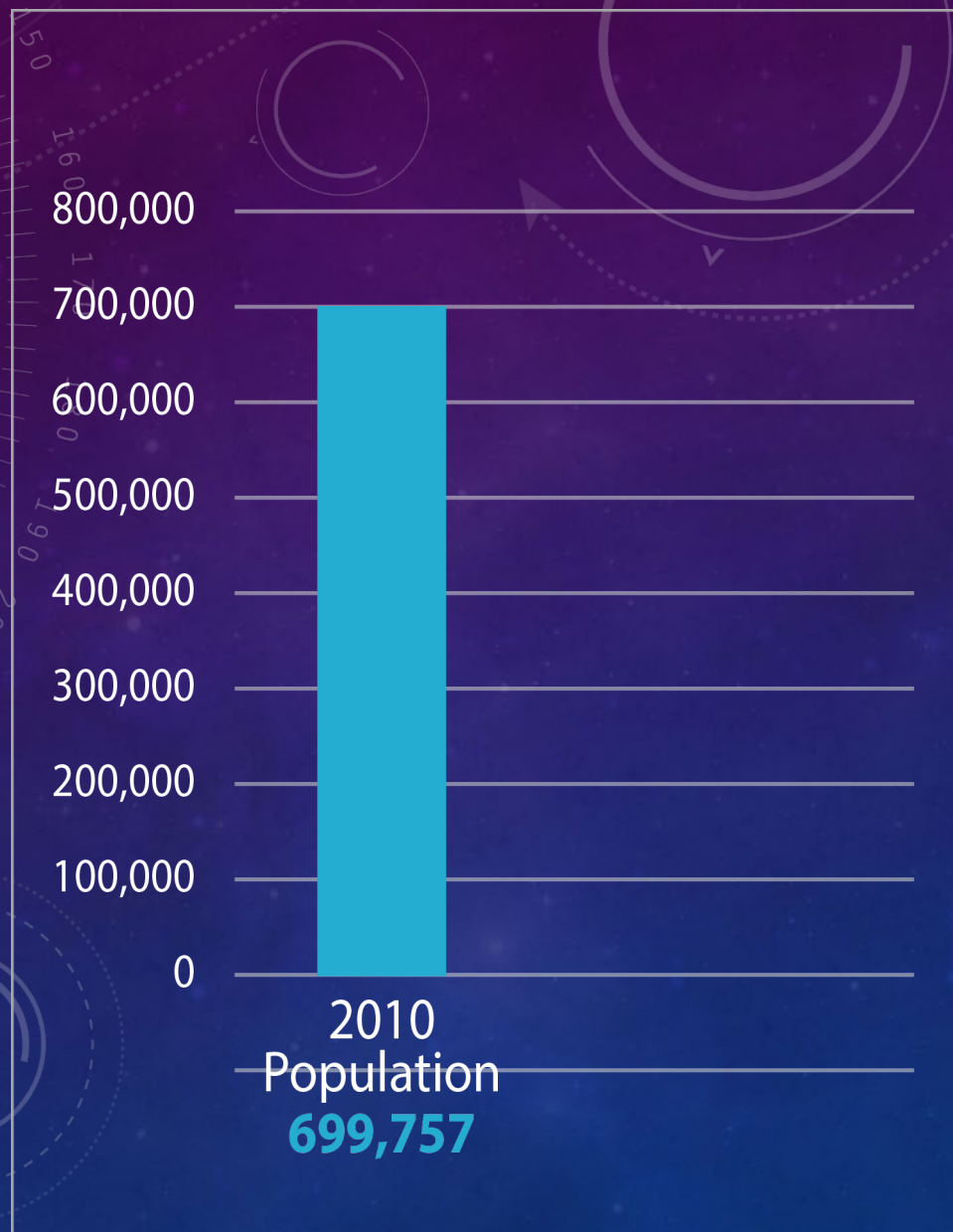
---

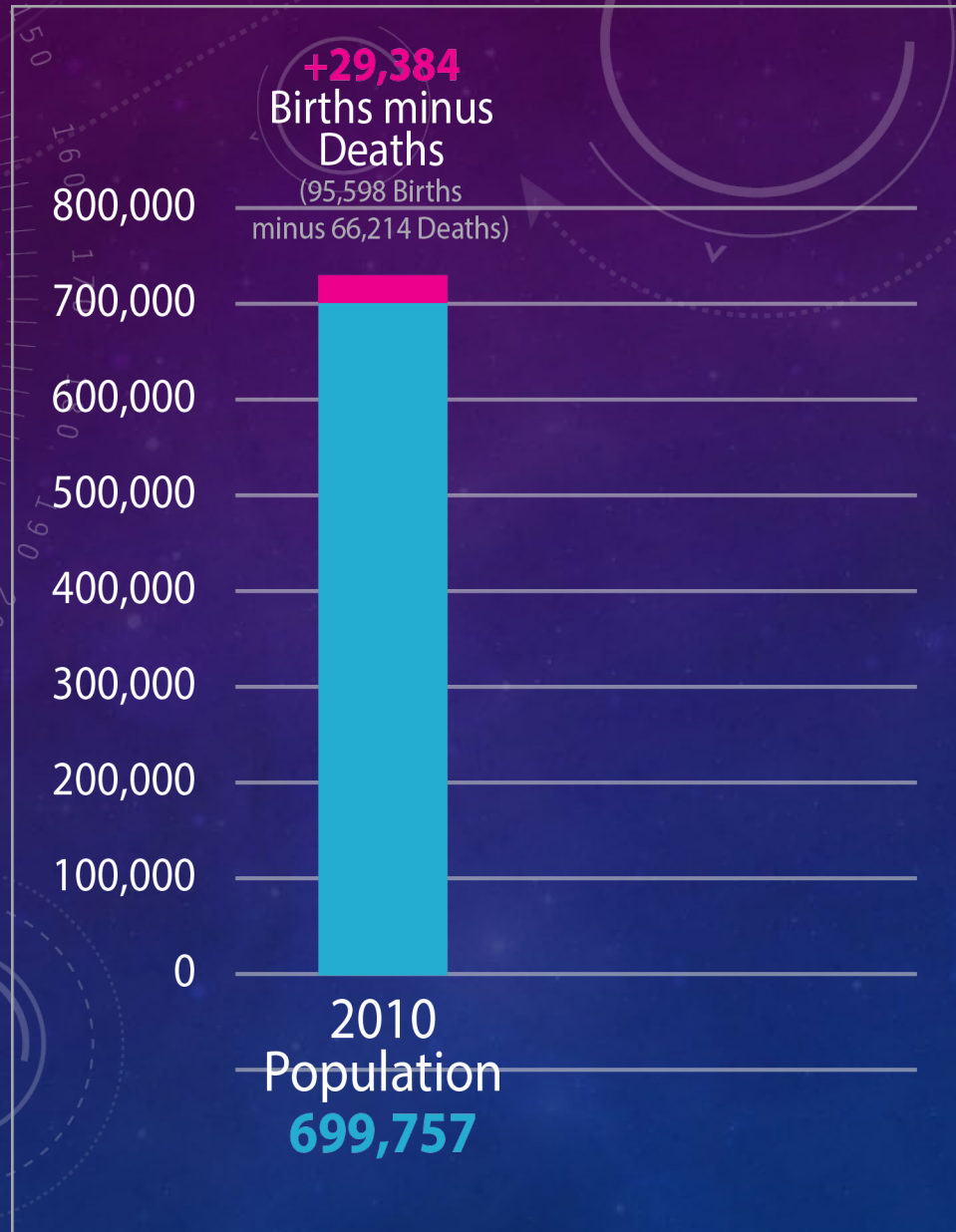
IN CENTRAL ARKANSAS

# OVERVIEW 2020

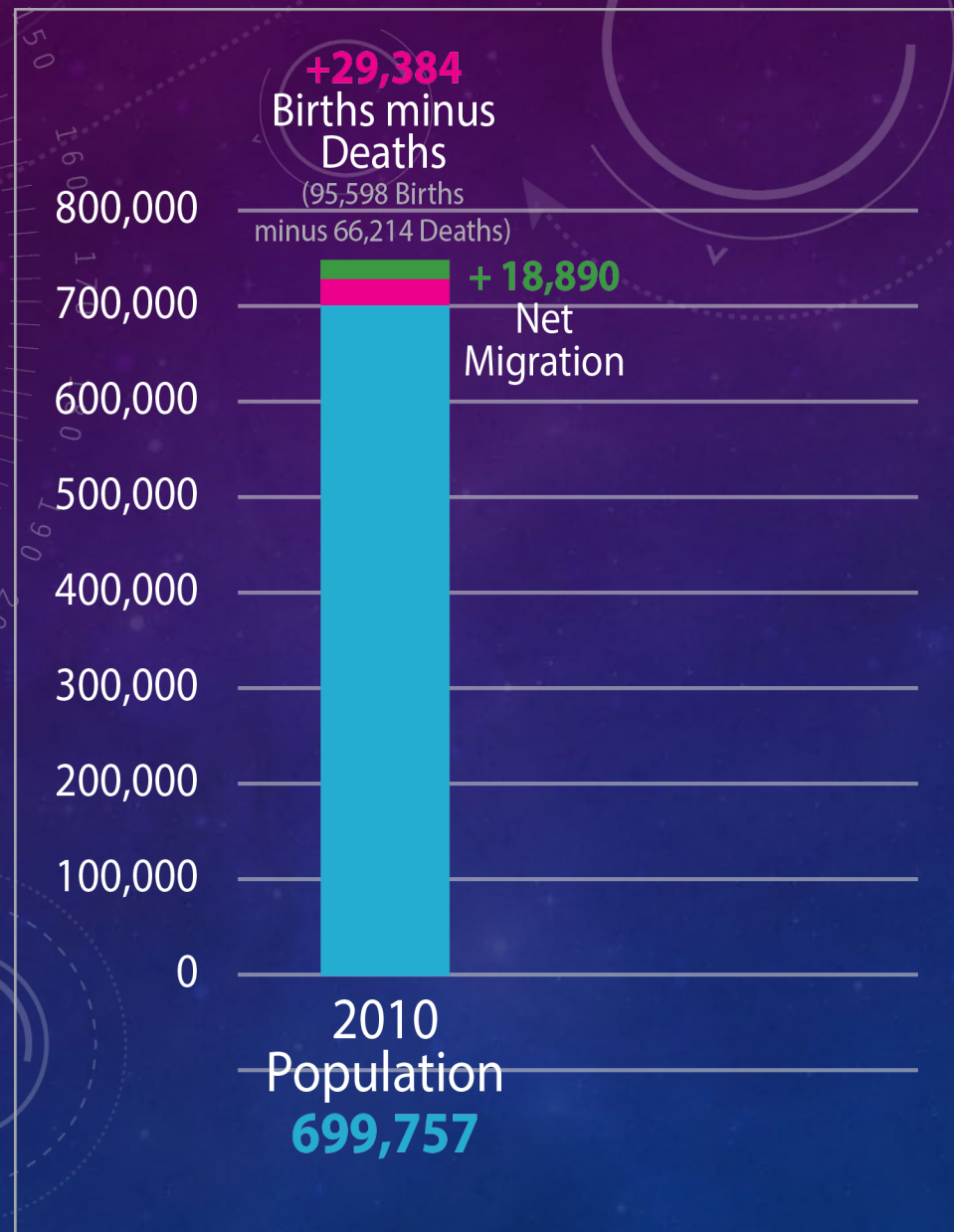
- National, state and local population growth slowed in the 2010-2020 decade.
- Little Rock MSA growth rate dropped from a very fast 14.6 percent 2000-2010 to 6.9 percent 2010-2020.
- The region grew a little more slowly than the U.S. average, but well above the state average.

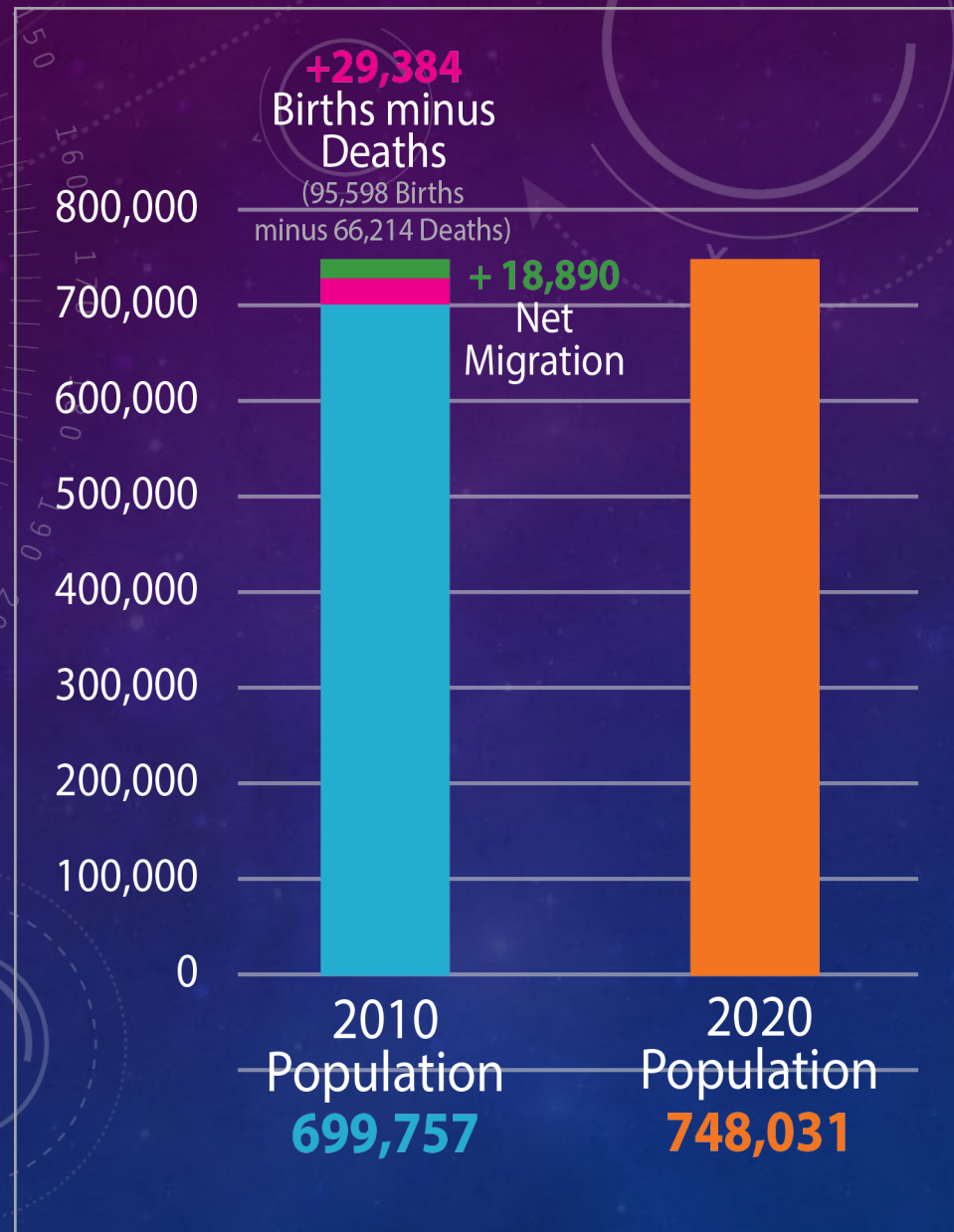












# INSIDE THE REGION

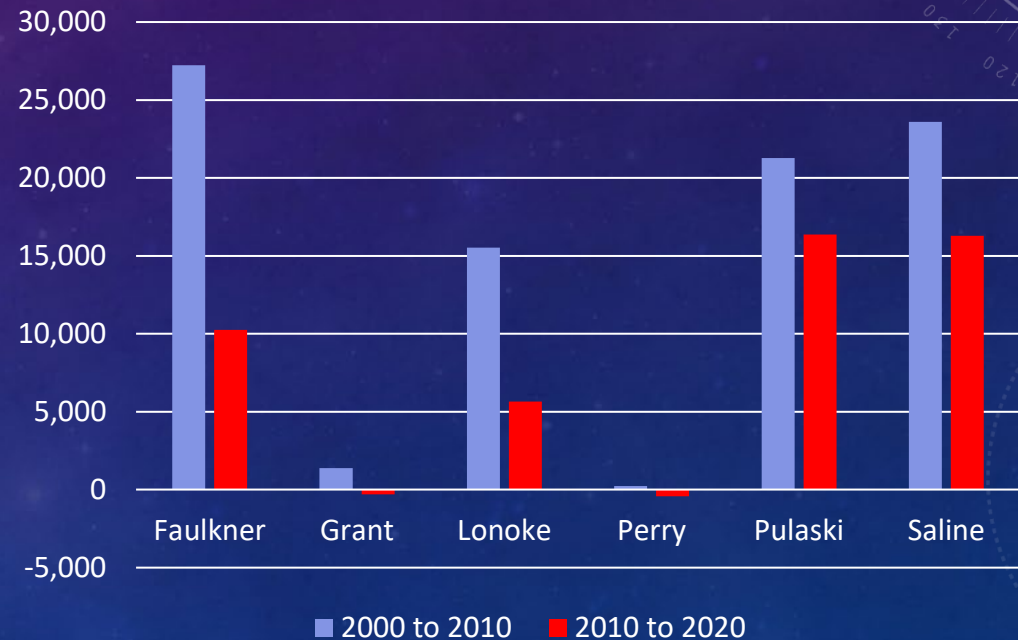
All counties slowed in the 2010-2020 decade, compared with the previous ten years.

Faulkner and Lonoke Counties slowed by over half. Their *rates* of growth remained above the regional average.

Pulaski County saw the greatest total population growth but its rate of growth (4.3 percent) was a bit below the regional average.

Saline County gained over 16,000 people – 15 percent and the fastest rate among the counties.

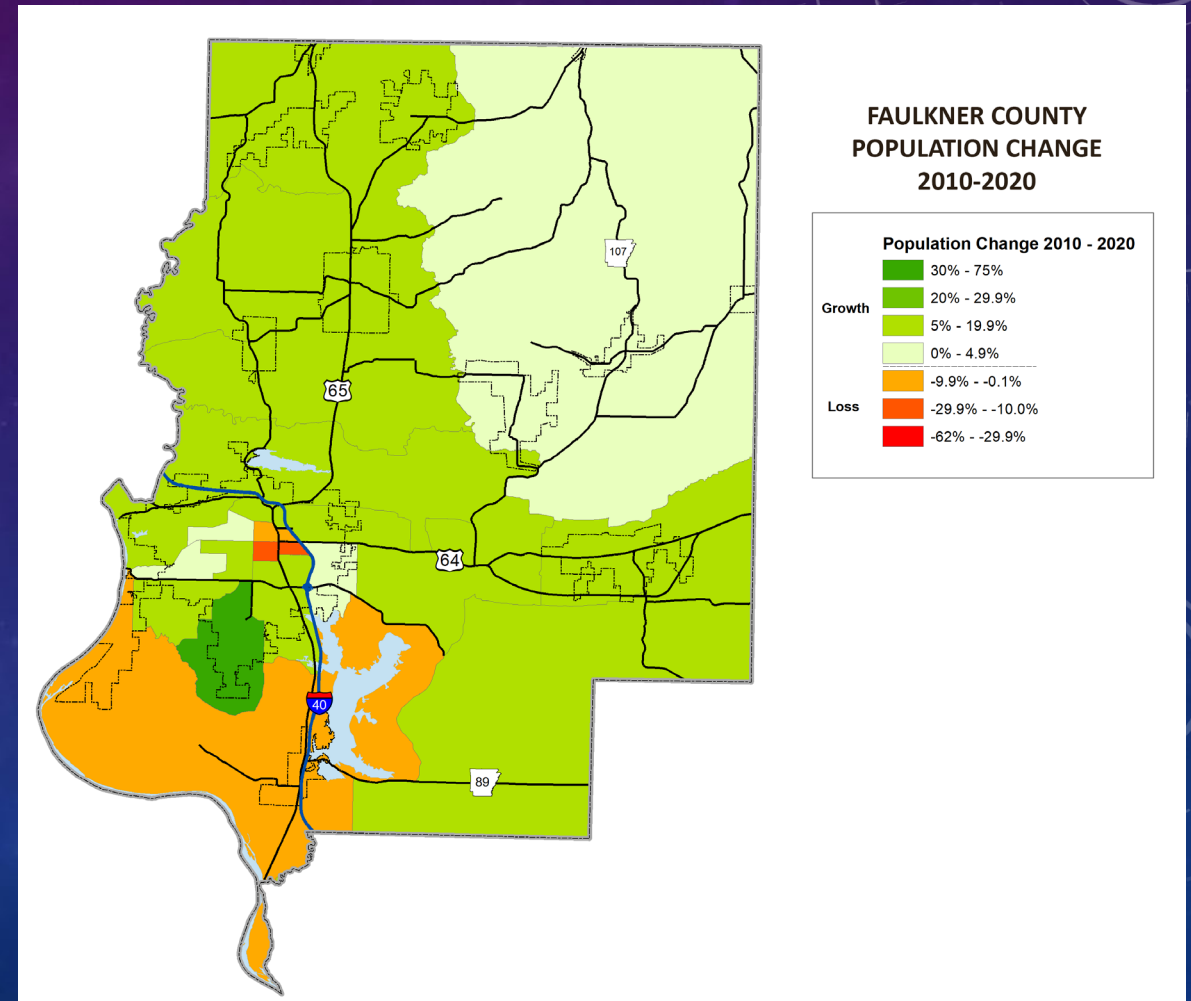
Population Change by County





# FOCUS ON FAULKNER COUNTY

- Conway reached 64,134. This was just shy of North Little Rock – a surprise.
- Greenbrier and Wooster both grew by about 21 percent, Vilonia by 12 percent.





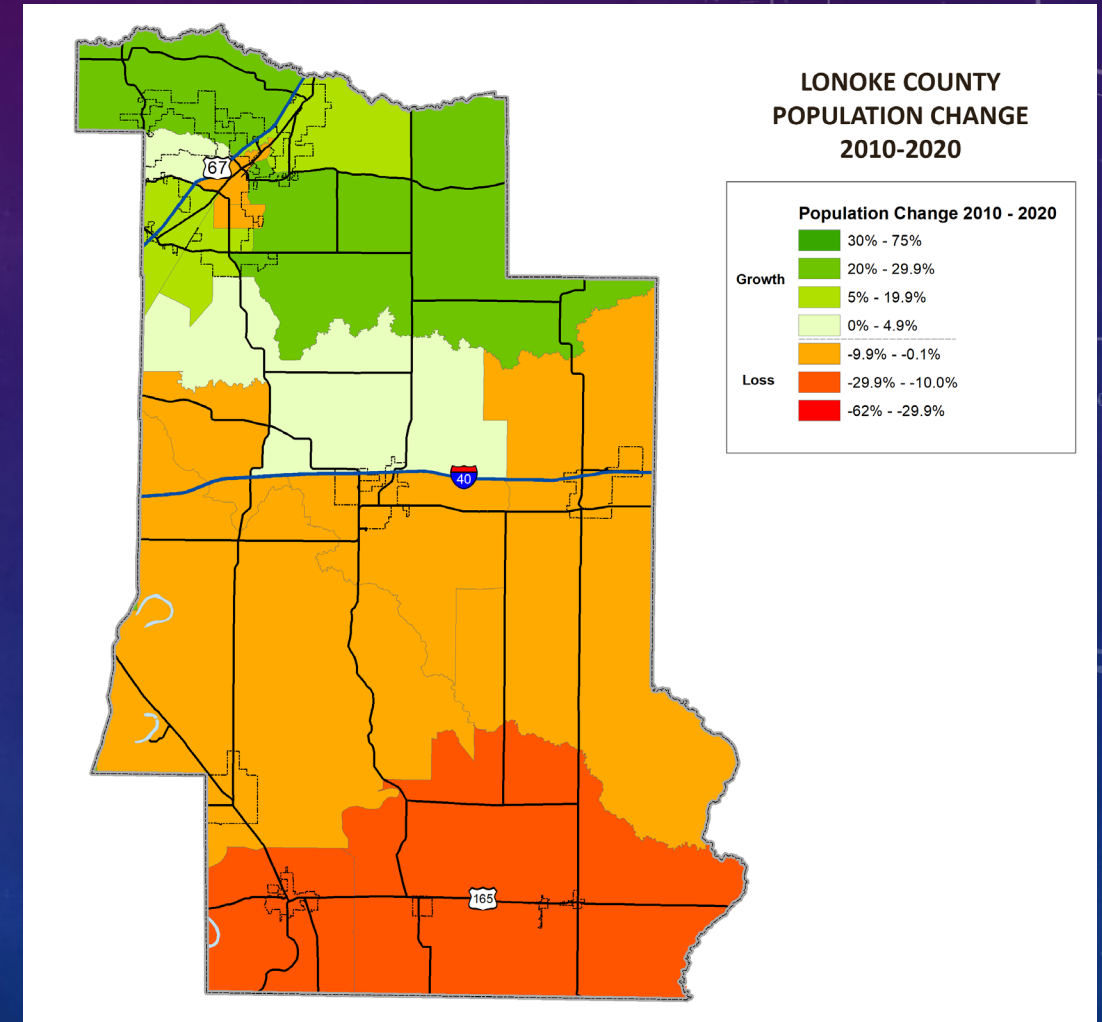
# FOCUS ON GRANT AND PERRY COUNTIES

- Both counties saw a slight population loss.
- Down 0.6 percent in Grant County.
- Down 4.1 percent in Perry County.
- Both counties have a high share of non-Hispanic whites, a group which saw net population decline during the decade.



# FOCUS ON LONOKE COUNTY

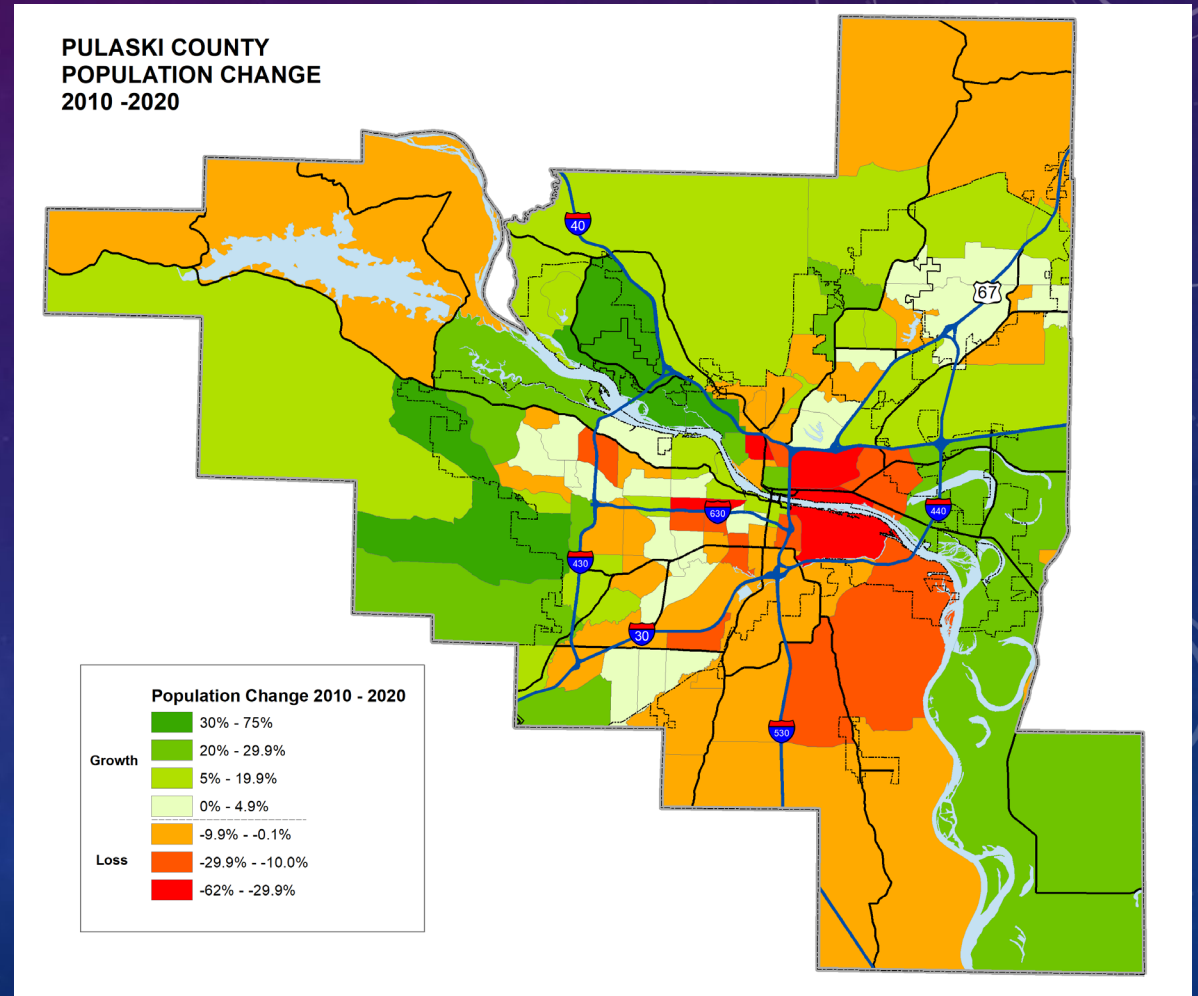
- Although its rate of growth slowed from the previous decade, Lonoke County hosted the region's fastest and second-fastest growing cities. These were:
- Austin (now 3,460, up nearly 70 percent)
- Ward (now 6,052, up 49 percent)
- Cabot grew about 12 percent, to 26,569.
- Rural/unincorporated Lonoke County generally saw slow growth or decline





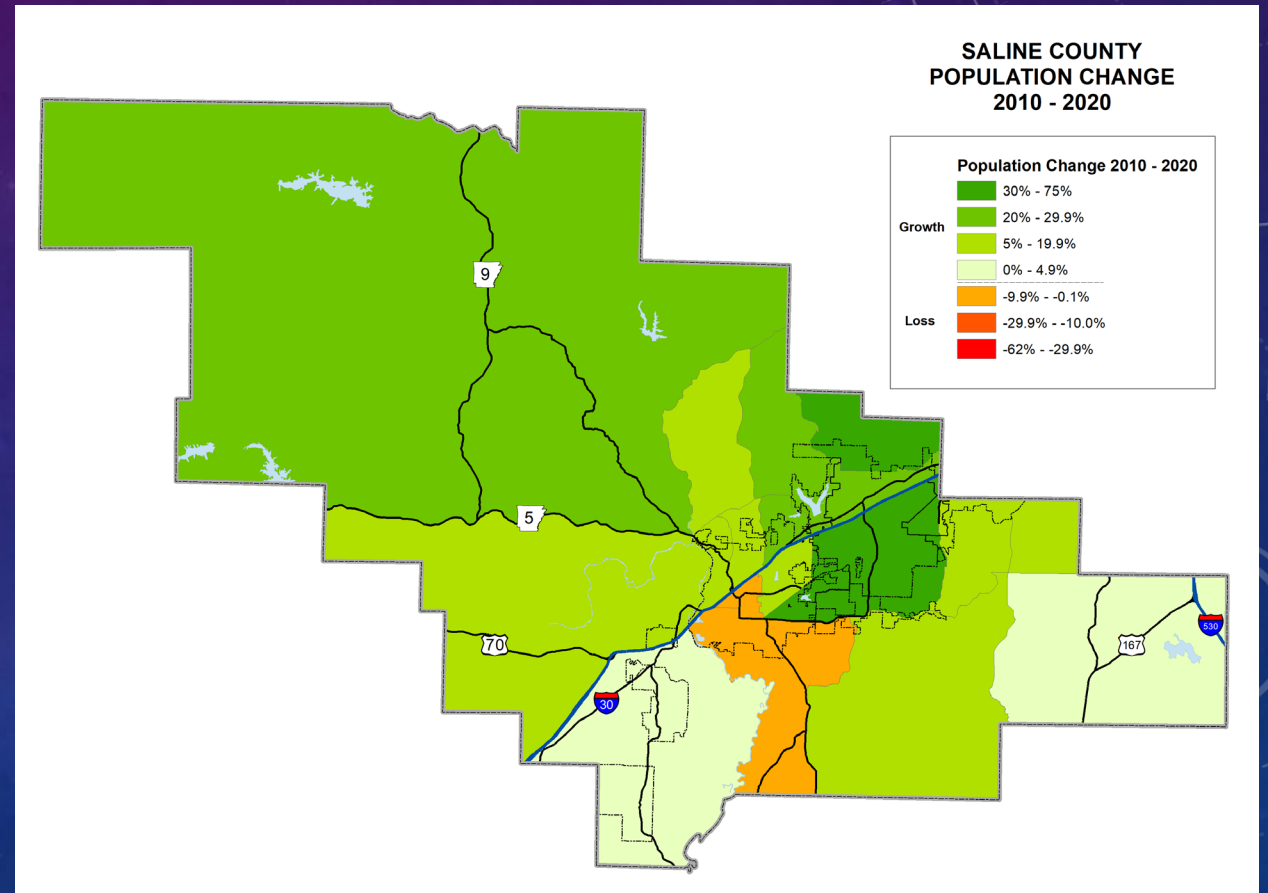
# FOCUS ON PULASKI COUNTY

- Pulaski County grew by the greatest amount among the region's counties. This was a reversal from previous decades.
- Population came in at 399,125, just shy of the 400k mark
- Little Rock passed the 200k mark at 202,591. It gained 9,067 people – the largest city growth in the region.
- North Little Rock edged out Conway to stay second-largest in the region at 64,591.
- Unincorporated/rural population declined slightly to 47,944.



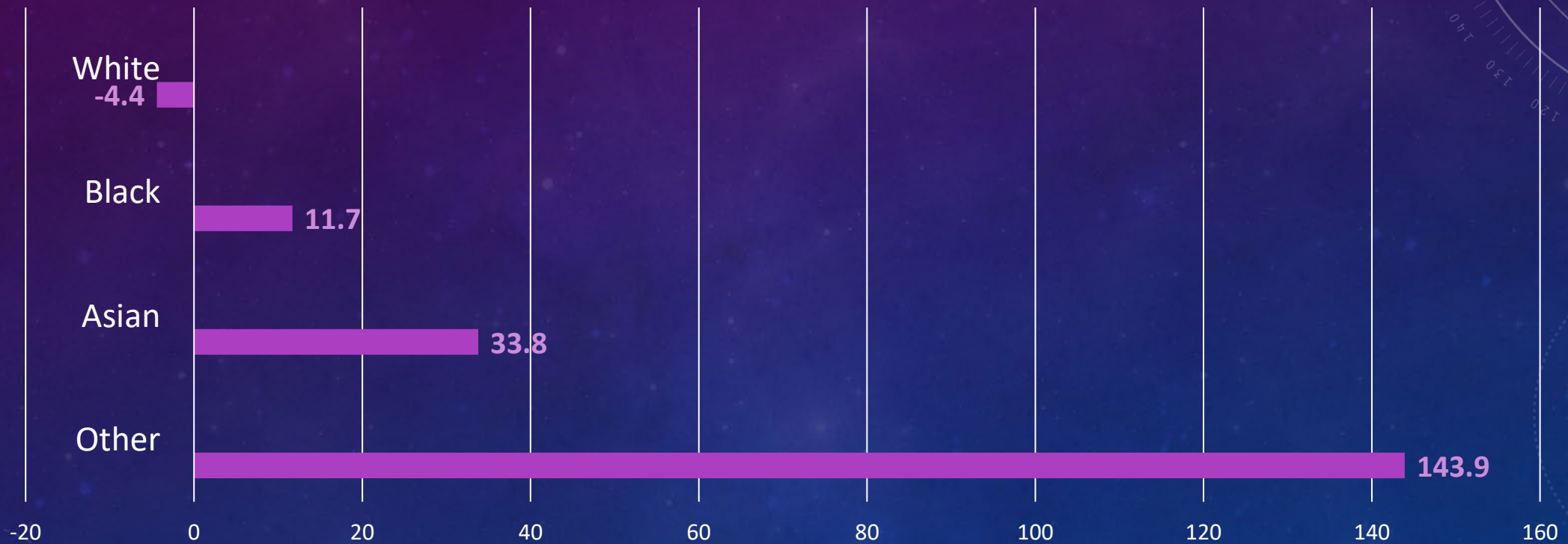
# FOCUS ON SALINE COUNTY

- Saline County was the region's fastest-growing county by rate, gaining 15.2 percent from 2010 to 2020.
- This was nonetheless slower in absolute and percentage terms than the previous decade.
- Benton is the region's fourth-largest city at 35,014.
- Bryant is still growing at a rapid pace at nearly 24 percent
- Shannon Hills was the region's third fastest-growing city by rate, reaching 4,490.

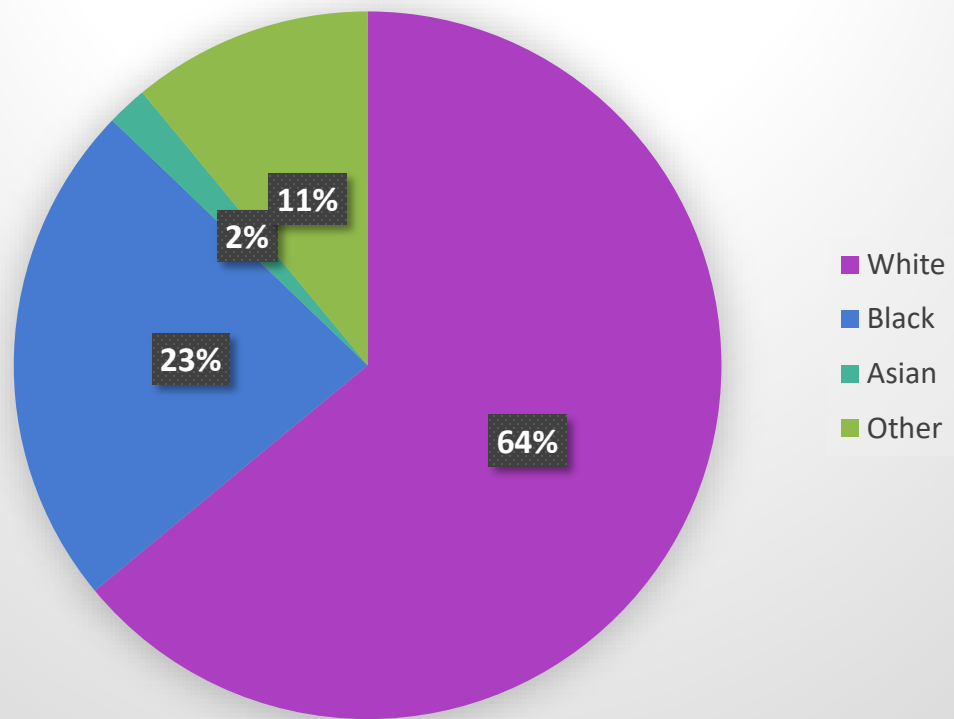




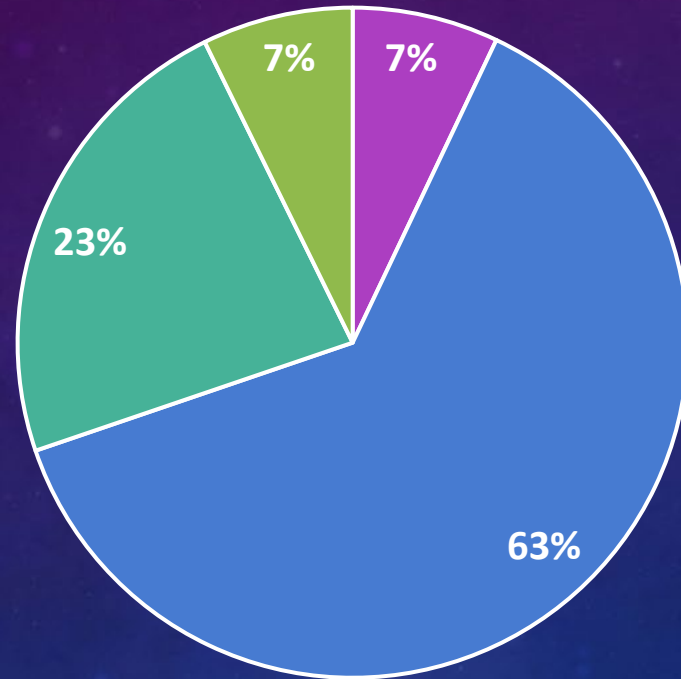
# LITTLE ROCK MSA PERCENT POPULATION CHANGE BY RACE 2010-2020



# LITTLE ROCK MSA POPULATION BY RACE 2020

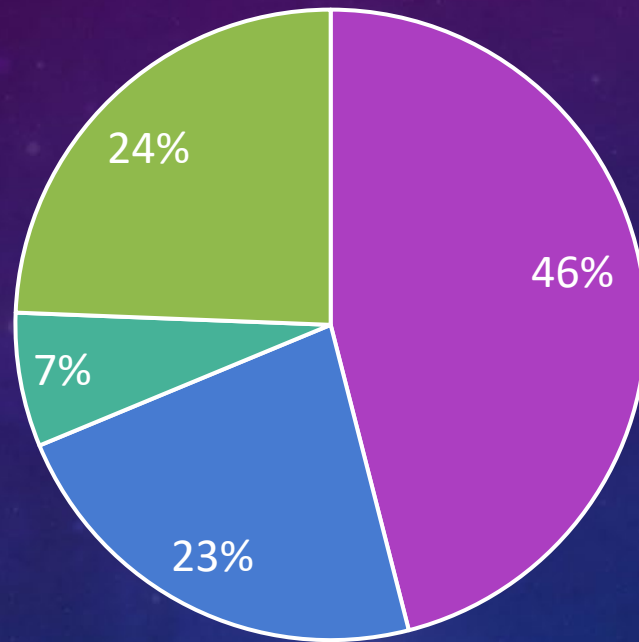


# LITTLE ROCK MSA HISPANIC ORIGIN



■ Hispanic ■ Non-Hispanic White ■ Non-Hispanic Black ■ Non-Hispanic Other

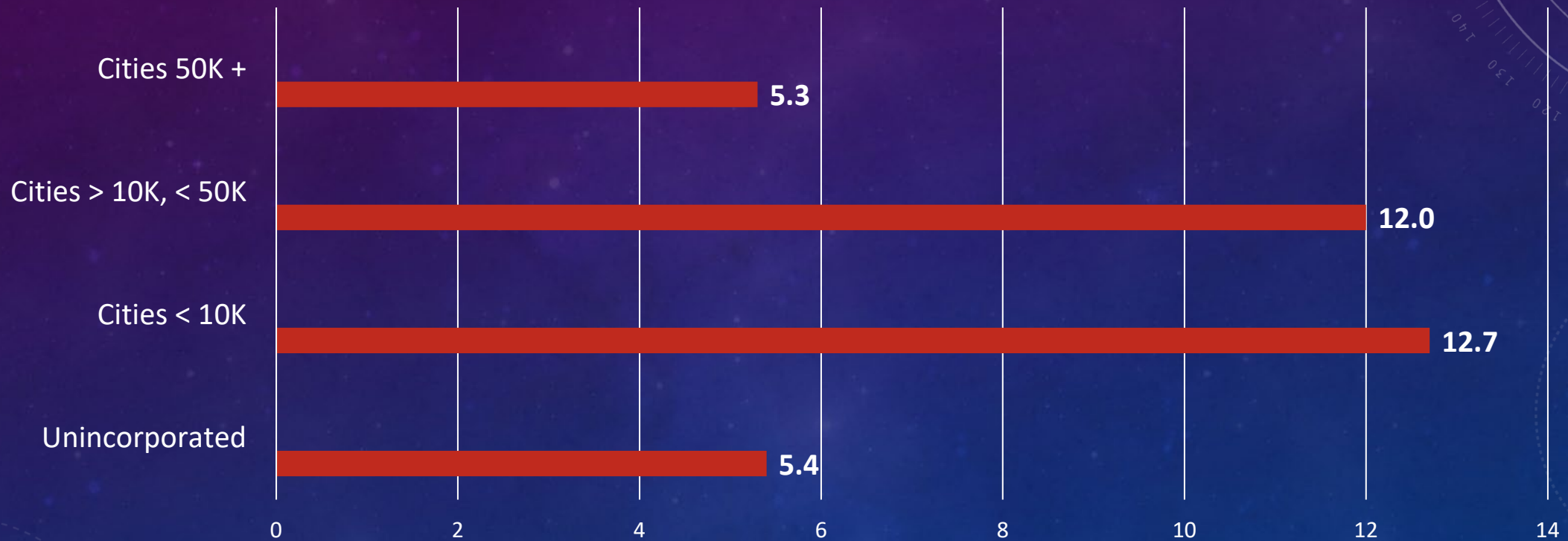
# REGIONAL POPULATION SHARE BY CITY SIZE



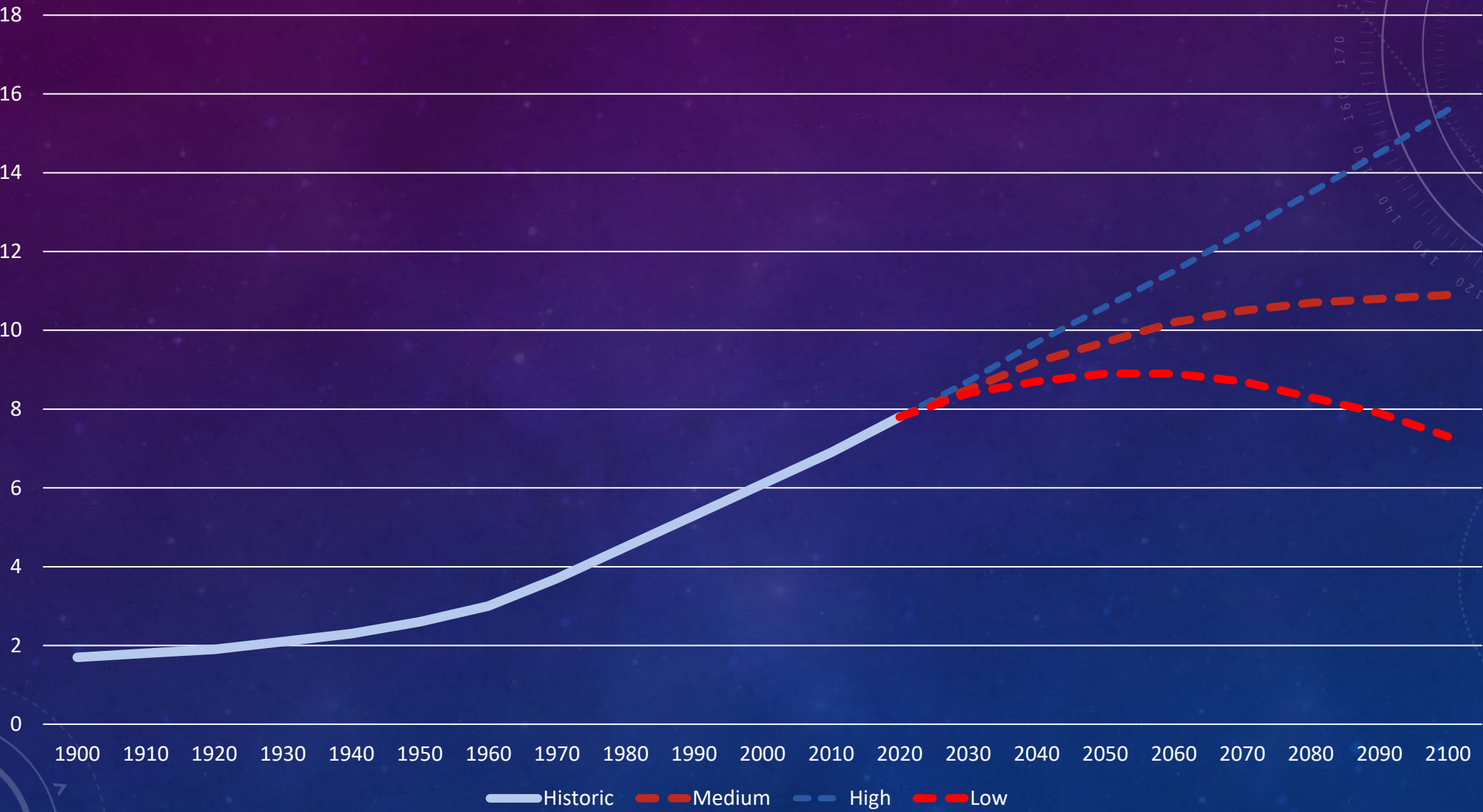
■ Cities 50K +   ■ Cities > 10K, < 50K   ■ Cities < 10K   ■ Unincorp.



# PERCENT GROWTH BY CITY SIZE 2010-2020



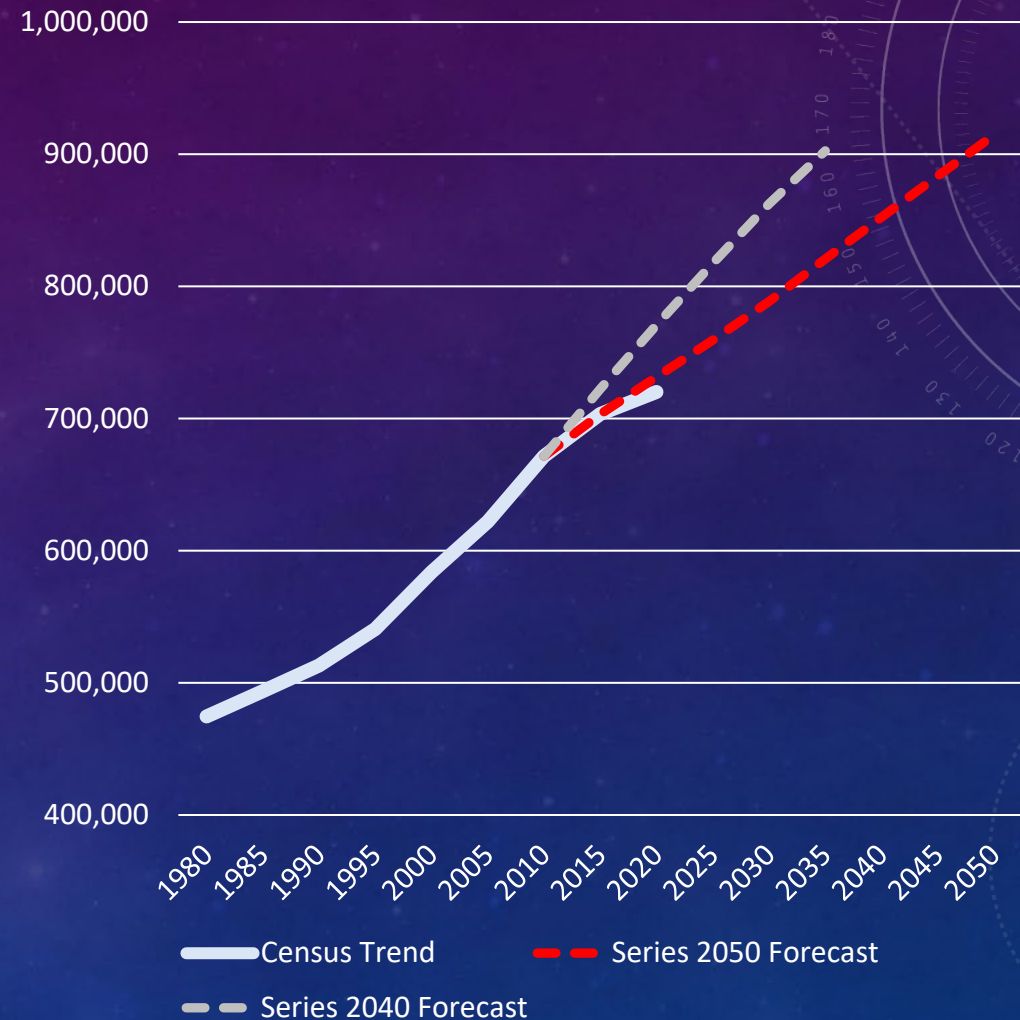
# GLOBAL POPULATION TRENDS



Source: United Nations

# THE LONG TERM

- Regional growth picked up during the 1990s, picked up further after 2000, then slowed sharply after 2010.
- Metroplan revised its forecast once the post-2010 slowdown was evident.
- Population growth is slowing across the globe.
- U.S. fertility is falling.
- Growth is driven by migration.
- We are unlikely to again see the kind of growth we assumed as normal in past decades.





# HERE TO HELP



METROPLAN

SMART PLANNING MAKES SMART PLACES.

- City and county profiles on Metroplan web site.
- We answer data questions, analyze data for our members. Contact Jonathan Lupton at 501-372-3300 or [jlupton@metroplan.org](mailto:jlupton@metroplan.org).
- Busy redistricting post-Census.
- State Data Center has profiles at <https://arstatedatacenter.youraedi.com/>